



Branton First School Summer term 2016

Literacy

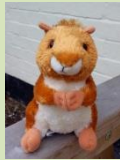
Inc reading and writing

- Read Write Inc phonics Programme
- Literacy and Language
- Spellings (ipads) and Grammar
- Action rhymes, instructions, stories about families, information texts
- Letter writing
- Castles (Class 1)
- Beaches (Class 1)



Understanding of the World Science

- Plants and planting
- Growing
- Observing changes
- Investigations



Geography

- Settlements
- Fieldwork
- BB Squirrel (Class 1)



History

- Anglo-Saxons
- Visit to Alnwick Castle



RE

- Transition and changes
- Ramadan and Eid (Islam)

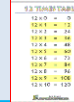


Computing

- Posters using publishing software

Mathematics

- Place value (understanding the value of a digit in a number)
- Problem solving including forest school
- Addition and subtraction
- Tables and inverse (division)
- Using Active Learn at home and school
- Enterprise!



Expressive Arts and Design

- Sing-up songs
- Drama/dance with Miss Thomson
- Violin session whole school, reception to year 4
- Partnership Music Festival at Alnwick Gardens
- Charanga music
- Local show entries, including handicraft, painted stones, pencil drawings, paintings.



Communication and language

- Spanish
- Weekly Drama sessions
- Sharing assemblies
- 'Show and tell' Fridays!
- Speaking respectfully



Physical Development

- Swimming (Willowburn)
- Tennis
- Area sports events
- Walks in our locality
- Outdoor activities and learning
- Outdoor play equipment - balance
- Handwriting (Penpals)



Personal Social and Emotional development

- Our core values - confidence, happiness, enlightened, effective and respectful!
- Changes/transition
- My healthy body, healthy eating
- Growing and changing
- Forest School - working together, working cooperatively, sharing ideas, listening to others, following rules to keep us safe
- Enterprise activities
- Summer Fete preparation!

